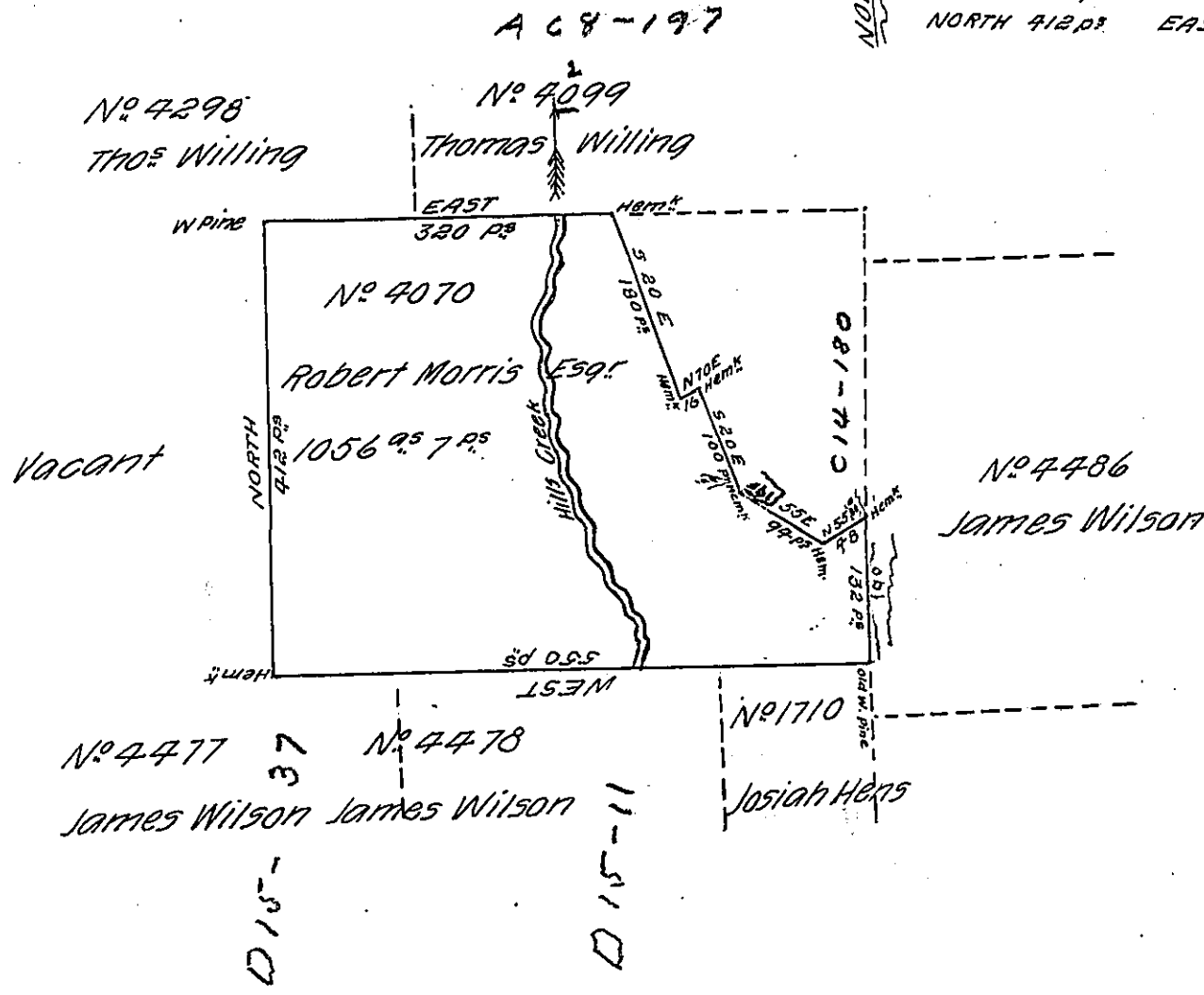


Began at a hemlock the NE corner
 of the tract 520 E 180 P^s
 N 70 E 16 P^s 520 E 100 P^s
 S 55 E 94 P^s N 55 E 48 P^s
 SOUTH 132 P^s WEST 550 P^s
 NORTH 412 P^s EAST 320 P^s



The draught of a tract of land situated on Hills Creek a branch of
 the waters of Crooked Creek which runs into the south branch of Tioga —
 in the County of Tioga containing one thousand and fifty six acres and seven
 square perches and allowance of six per cent surveyed the 28th day of June
 1817 in pursuance of a warrant to Robert Morris Esq. No. 4070 dated the
 30th day of August 1793

To Richard T Leech Esq.
 Surveyor General

By John Norris D.S.
 of Tioga County

IN TESTIMONY that the above is a copy of the original remaining on file in
 the Department of Internal Affairs of Pennsylvania, made
 conformably to an Act of Assembly approved the 16th day of
 February, 1833, I have hereunto set my Hand and caused
 the Seal of said Department to be affixed at Harrisburg,
 this twenty fifth day of April 1906

Geo. B. Brown
 Secretary of Internal Affairs.